

TYPE FLOOR

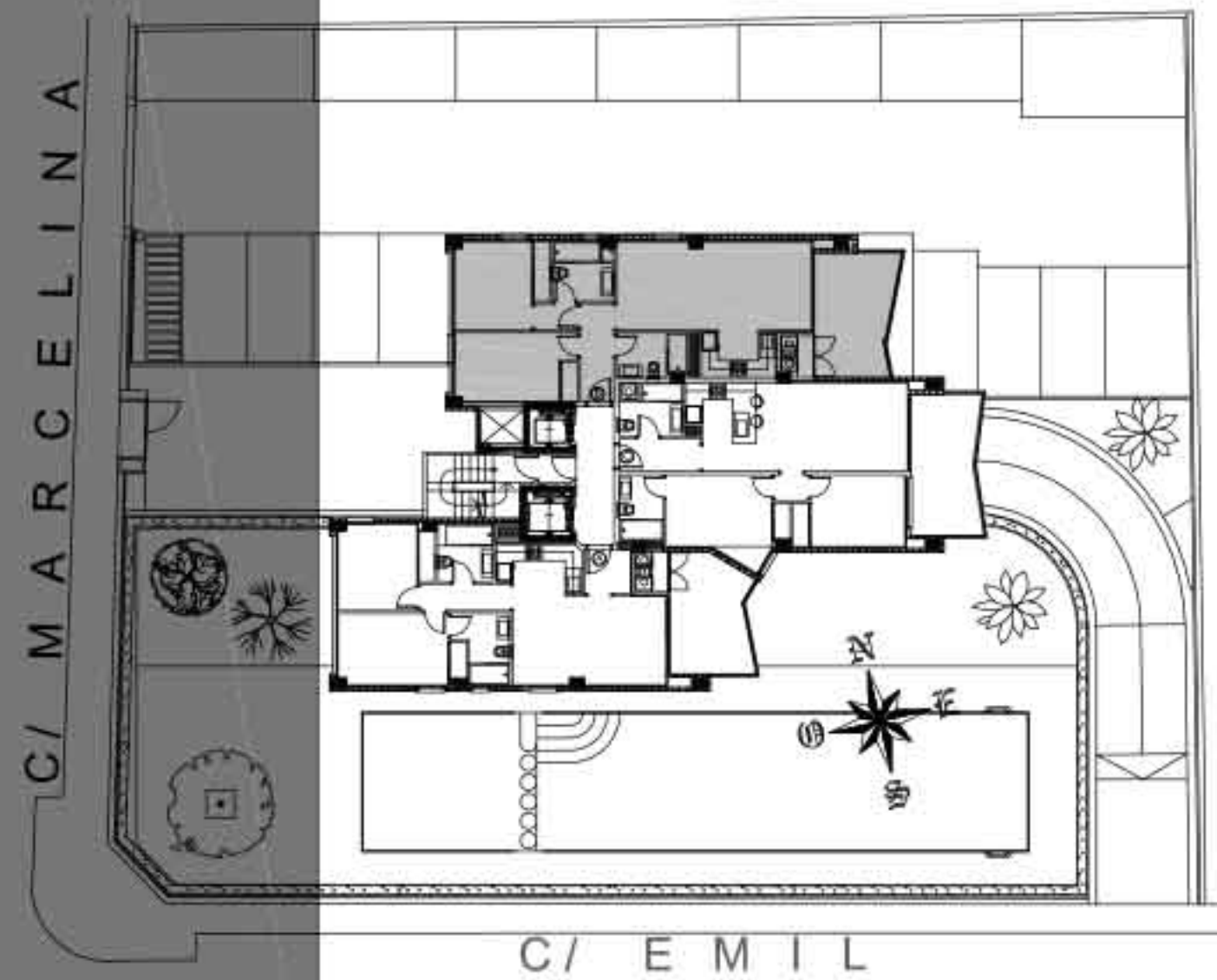
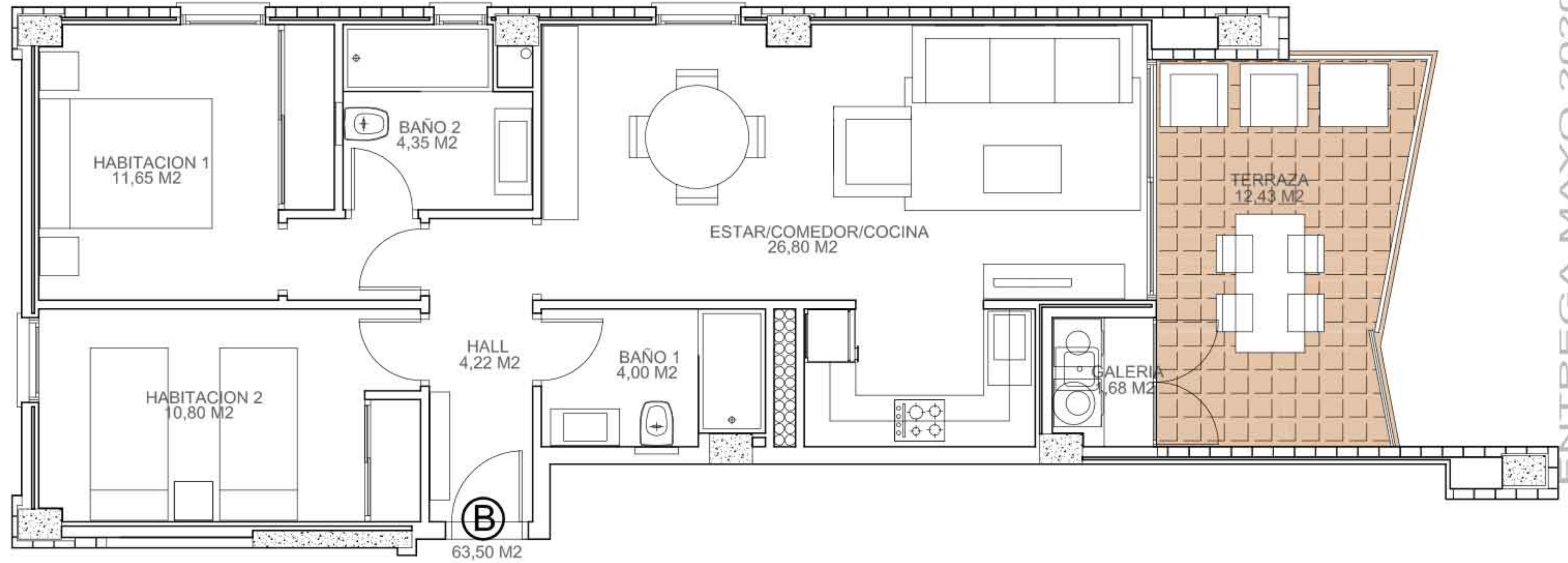
APARTMENT TYPE **B**

BUILDED SURFACE
75.77 m²

TERRACE SURFACE
12.43 m²

PROP. PART OF COMMON ELEMENTS
8.19 m²

TOTAL SURFACE
96.39 m²



ENTREGA MAYO 2020
CONSTRUCCIONES VARUDI, S.L.