

# TYPE FLOOR

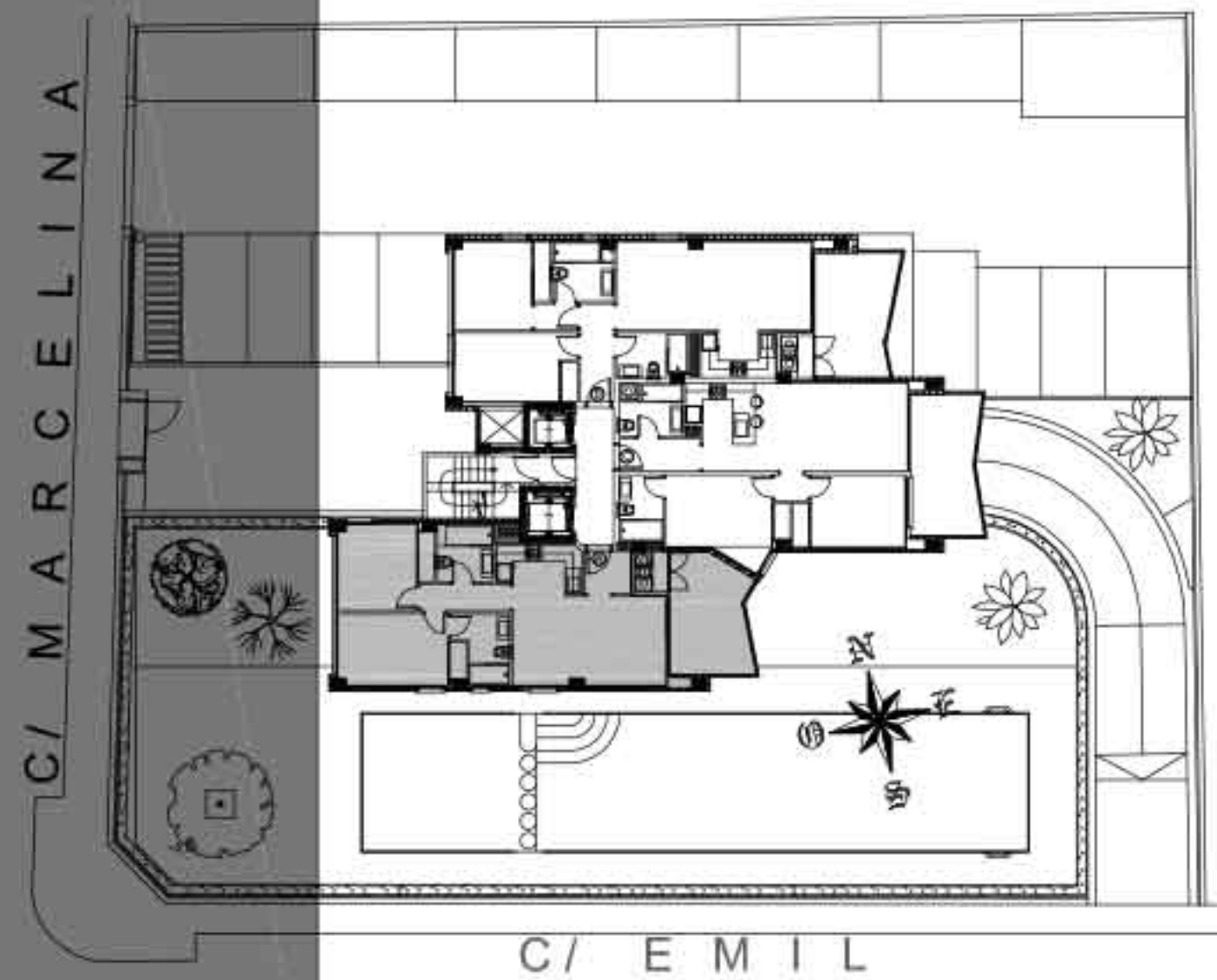
APARTMENT TYPE **A**

BUILDED SURFACE  
73.60 m<sup>2</sup>

TERRACE SURFACE  
12.02 m<sup>2</sup>

PROP. PART OF COMMON ELEMENTS  
7.96 m<sup>2</sup>

TOTAL SURFACE  
93.58 m<sup>2</sup>



ENTREGA MAYO 2020  
CONSTRUCCIONES VARUDI, S.L.

ESTOS PLANOS HAN SIDO REALIZADOS EN BASE AL PROYECTO BASICO, PUDIENDO SUFRIR MODIFICACIONES DURANTE LA EJECUCION

THESE PLANS HAVE BEEN MADE BY MEENS OF THE BASIC PROJECT AND THEY CAN SUFFER MODIFICATIONS DURING THE BUILT