

TYPE FLOOR

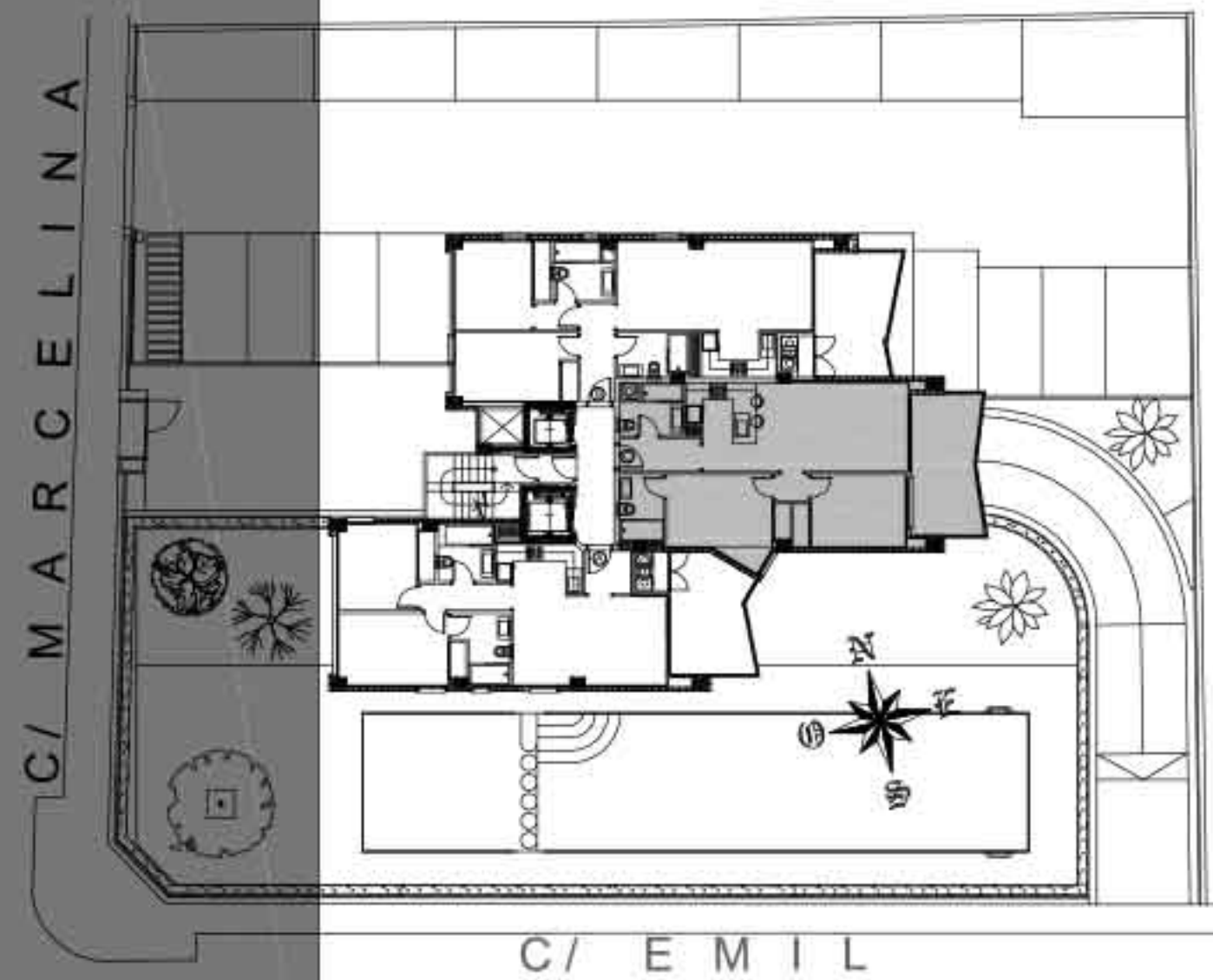
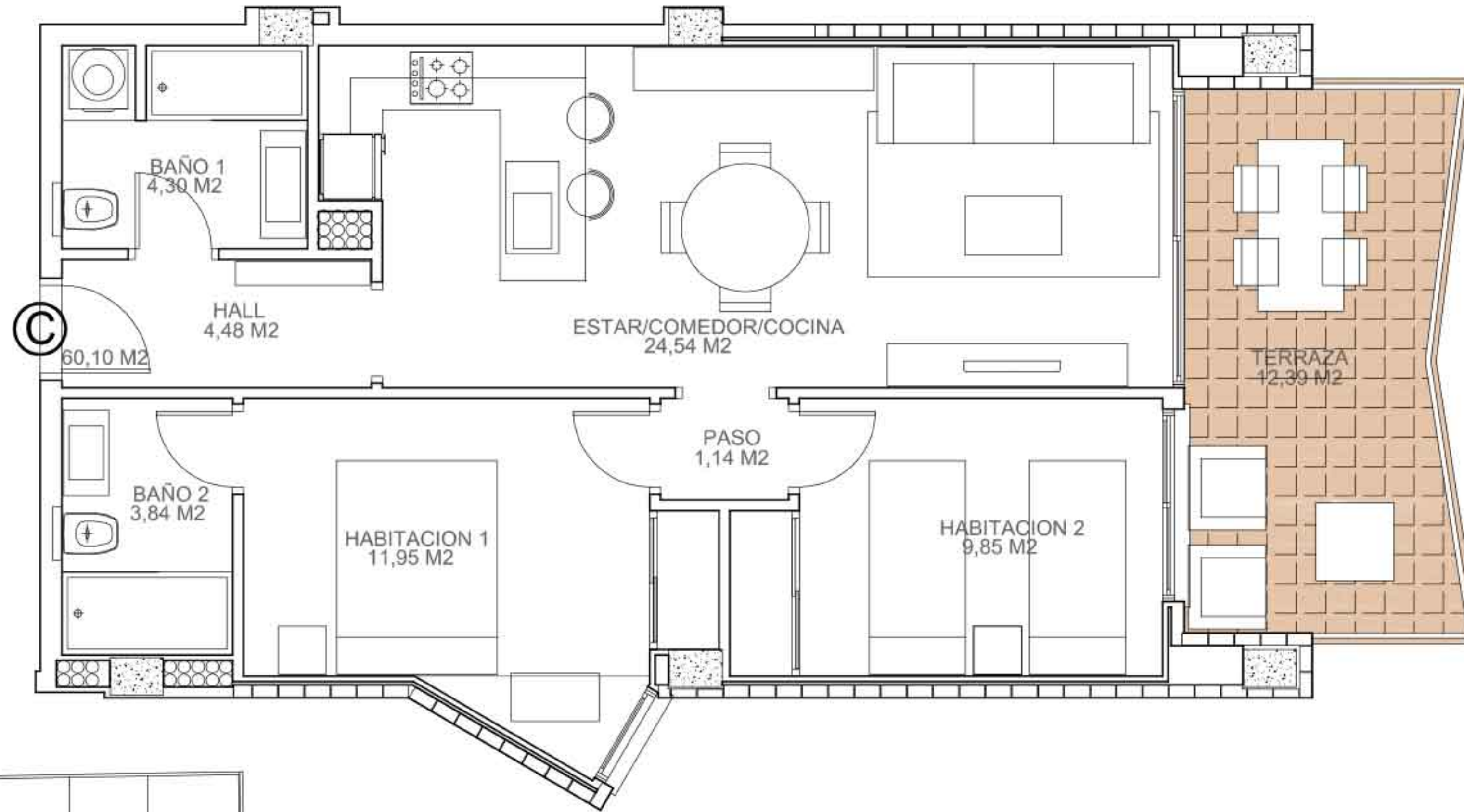
APARTMENT TYPE **C**

BUILDED SURFACE
69.24 m²

TERRACE SURFACE
12.39 m²

PROP. PART OF COMMON ELEMENTS
7.59 m²

TOTAL SURFACE
89.22 m²



ENTREGA MAYO 2020
CONSTRUCCIONES VARUDI, S.L.

ESTOS PLANOS HAN SIDO REALIZADOS EN BASE AL PROYECTO BASICO, PUDIENDO SUFRIR MODIFICACIONES DURANTE LA EJECUCION

THESE PLANS HAVE BEEN MADE BY MEANS OF THE BASIC PROJECT AND THEY CAN SUFFER MODIFICATIONS DURING THE BUILT