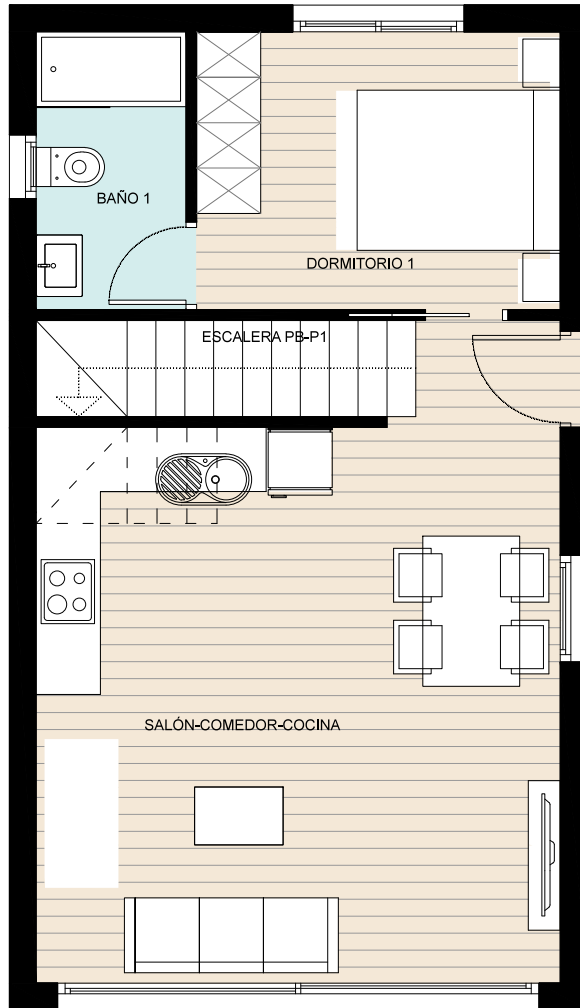
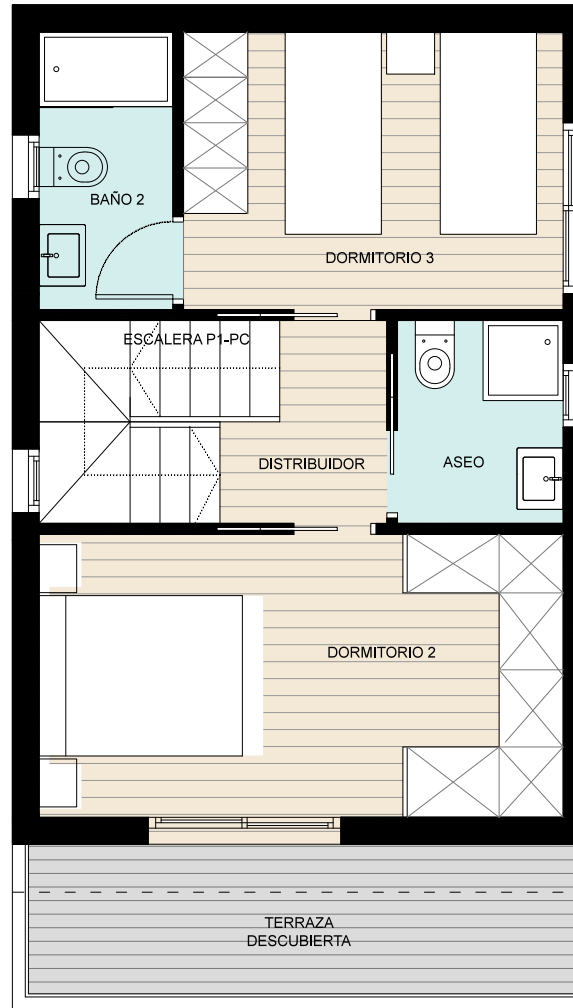


# La Vista Boulevard

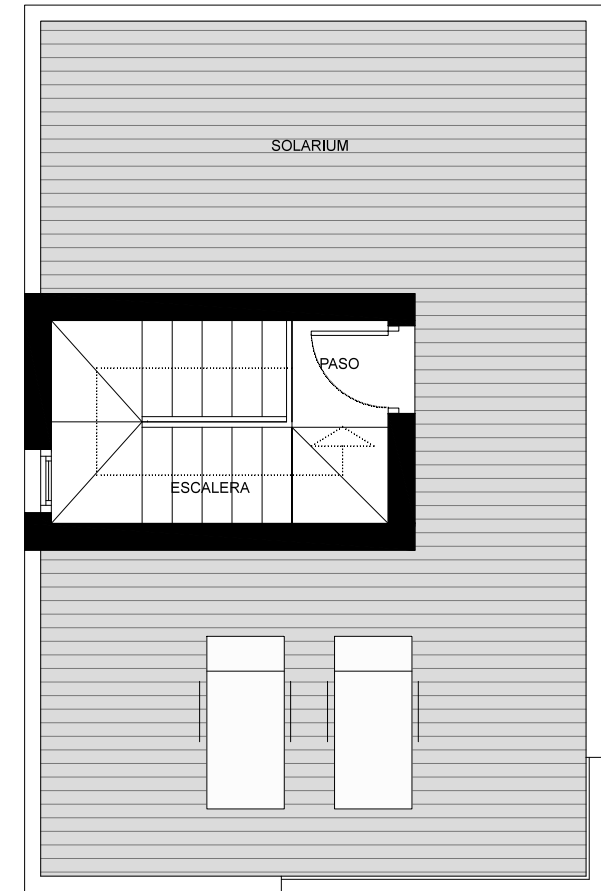
10 contemporary villas



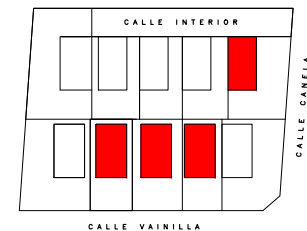
PLANTA BAJA



PLANTA PRIMERA



PLANTA CUBIERTA



## CUADRO DE SUPERFICIES

Sup. Total Construida Vivienda.....	101,90 m2
Sup. Terraza.....	7,14 m2
Sup. Solarium.....	32,40 m2

**SUPERFICIE TOTAL.....141,44 m2**

VILLA  
MISTRAL  
3Beds/3baths

COMMERCIAL PLANS. The information contained in the drawings may be subject to variations for commercial or legal technical reasons. The furniture included in the plans are merely informative.